

Fremantle  
Foundation  
Philanthropy for WA

# ANNUAL STORY

2022 – 2023

For the community, by the community

# Indigenous Acknowledgement

Fremantle Foundation wishes to acknowledge the Aboriginal people of the many traditional lands and language groups of Western Australia. We acknowledge the wisdom of Aboriginal Elders both past and present and pay respect to Aboriginal communities of today.



# Contents

Overview.....	2
Our Principles.....	3
Chair & EO Reports.....	4

## **Collective Giving** 6

Named Funds with our Foundation.....	7
Bequests.....	8
Individual & Family Funds.....	8
Group Named Funds.....	8
Company Named Funds.....	8
Thank you to our Named Funds.....	9
Named Fund Stories.....	10

## **Impact** 12

Our Impact.....	13
Key Impact Areas.....	14
Impact Snapshot.....	15
UN Sustainable Development Goals.....	16
Grants.....	18
Grants Allocation Summary 2022/2023.....	19
Granting Stories 2022/2023.....	20
Impact100 Fremantle.....	23
WA Relief & Recovery Fund.....	24

## **About Us** 26

Board of Directors & Staff.....	27
Financial Snapshot.....	28
Our Sponsors.....	29
Our Awards.....	29
Contact Us.....	30

# Overview

**\$2.8m**  
Donations received  
2022-2023

**\$1.1m**  
Community grants paid  
2022-2023

**\$4.6m**  
Total funds under management  
2022-2023

**\$8.8m**  
Donations received  
Since 2010

**\$4.7m**  
Community grants paid  
Since 2010

Corpus invested  
**100%**  
Responsibly



Arts & Culture



Homelessness



Family & Community



Environment



Health & Wellbeing



Education




Indigenous Australians

## Thank You

**4** New Donor Named Funds

**72** Total Donor Named Funds

**400+** Impact100 Fremantle Donors  
(Since 2013)

**2.1**   
full time equivalent staff

## Grants Map



# Our Principles

## What is a Community Foundation?

Every vibrant community in Australia has two important things going for it. First, you've got generous citizens who donate time and money to make their community stronger and second; public charities who work to make things better.

In an ideal world, dollars would flow efficiently from donors to charities and information about results and outcomes would flow smoothly back to donors. Unfortunately, that's easier said than done.

All too often, donors aren't sure how to make their donations really count and many charities that do great work are chronically starved for resources. That's where a community foundation comes in.

Our job as a community foundation is to understand the DNA of our community and the needs that exist there. We work tirelessly to know the intricate fabric of local charities, and more specifically, where the greatest ideas, opportunities, leaders and needs lie.

With this view, we are able to educate donors about the most effective charities, connect strong charities with new donors, and identify critical issues not being adequately served.

Fremantle Foundation is a vital portal to effective charitable giving, enabling donors large and small to invest their resources where they are most needed and where they will have the greatest impact, and that's good for everybody.

## Purpose

Fremantle Foundation exists to help improve the quality of life in the Western Australian community now and in the future.

## Mission

We achieve this by encouraging philanthropy, developing a perpetual flexible endowment, assessing, and responding to emerging and changing needs, serving as a coordinator of charitable activities, and promoting the efficient management of charitable funds.

## Vision

By 2031, we:

- are the Community Foundation in WA that leverages collective giving and support for WA community in perpetuity
- understand and focus on contributing to the big problems that need to be solved in the WA Community
- are the leading advocates for community philanthropy in WA and drive change
- are a trusted collaborator that works for the greater good
- are agile and able to respond where needed in WA
- have a strong network of donors and beneficiaries across the State
- are on our way towards \$25M plus in funds under management
- have a fully funded operational budget
- have a passionate, engaged, happy and committed team to deliver our services
- are a catalyst for positive change in Western Australia; engaging partners, raising a flexible endowment, leveraging resources to solve problems, and contributing to the common good

# Chair & EO Reports



## Chair's Report

Fremantle Foundation is a Community Foundation that leverages giving and support in perpetuity, and our collective impact drives us. Over the past financial year, under the leadership of Sue Stepatschuk, followed by our new Executive Officer, Stu MacLeod, we have seen giving to the Foundation and by the Foundation continue to grow, with \$1.1m in grants delivered.

We celebrate and appreciate the meaningful outcomes our donors have facilitated through their generosity. Yet more is needed to address societal and environment challenges across our community.

Our strategic plan 2021-2031 was reviewed in April 2023 and reflects these growing needs and the ambition set by the Australian government to double philanthropic giving to charities by 2030. As we aim towards \$25m in funds and grow as a catalyst for positive change in Fremantle and across Western Australia, we look forward to playing an important role in building capacity and long-term support for community.

Aligning with our governance and strategic objectives, we have also undertaken a comprehensive policy review and begun implementation of a stakeholder management plan.

Testament to our collective local impact, we were honoured to receive the City of Fremantle Leadership Award - Contribution to Fremantle, at the Fremantle Chamber of Commerce Awards 2022.

The outcomes of Fremantle Foundation are not realised without the expertise, time and dedication of the volunteer Board of Directors and committed Foundation staff. It is a privilege to serve the Fremantle Foundation, and I work alongside them with pride and gratitude.

At board level we farewelled James Wild after three years of support, as well as Sandra Di Bartolomeo, and we thank them for their care and contribution. We are delighted to welcome new Board member, Andrea McCallum who brings extensive legal practice and community experience to the Board.

Our staff team of Stu, Sue, Pauline, Mrinal and McCusker Foundation interns have continued to overdeliver, and we thank them all for their commitment.

Importantly, and together with the Board, I extend our special thanks to our donors, capacity supporters and partners for their foresight and commitment to working together over the past year and continuing the journey with the Foundation.

As we look to contributing to better outcomes for community in the coming years, we encourage you to get in touch with us should you wish to learn more or get involved.

**Tanya Hundloe**  
*Chair*



## Executive Officer's Report

Since 2010, this organisation has grown organically, with a focus on understanding its communities and addressing need wherever possible. This organic growth reached new levels in 2022/23, with a record \$2.8M donated into Named Funds; double last year's record total. We were also able to grant out a record \$1.1M this year, including \$380,000\* in relief funding for those communities affected by the Fitzroy River flooding in January 2023. One of our Named Funds, the Bibbulmun Fund, also celebrated a milestone \$1M in giving since inception.

But these figures don't tell the whole story. The real stories are those that tell the impact of our granting on the ground, that showcase the incredible efforts and outcomes of the charities we support. We have tried to highlight some of these key moments in this Annual Story.

I am so proud of the Fremantle Foundation family.

It is a universal truth that everyone working within the not-for-profit space goes far beyond their job description, far beyond their paycheck... I am blessed to work alongside such dedicated, intelligent, passionate staff, and equally blessed to have such a pro-active, supportive volunteer Board of Directors.

Our donors are a constant source of inspiration. I relish the opportunity to meet with them and learn about their journeys, their motivations for giving. Whilst we pride ourselves on our connection to place-based charities and their work, I am always surprised how plugged-in and connected our donors are as well.

Our charities continue to amaze me! The sheer amount of work that is done, on either a shoestring budget or completely volunteered, is deeply humbling. Such crucial, vital work that addresses real need, that seeks to fill gaps in support, relief, education, treatment, nurture,

compassion. These charities are the reason we exist, and it is my hope that we can continue this year's momentum of growth into 2024. Each new donor brings us closer to our goal of a sustainable, perpetual fund that enables real, measurable, lasting positive change for communities across WA.

Over the past twelve months, we have made significant changes to the way we operate.

We increased our staff capacity to keep pace with our accelerated growth by creating a new position, the Director of Partnerships and Social Impact. Sue Stepatschuk has excelled in this role, forging new relationships, and developing collaborative granting projects involving key funding partners like the Paul Ramsay Foundation.

An in-depth analysis of Impact100 Fremantle identified opportunities to improve our approach to this vital program. This analysis led to the postponement of Impact100 Fremantle in 2023, with a view to building back better in 2024. We have already tripled the size of our volunteer committee and have begun laying the groundwork for our best year yet.

A complete review of our IT, systems and processes resulted in a successful grant through the Stronger Communities Programme, delivered by Josh Wilson's office. This grant saw us upgrade all our IT hardware and systems, enabling us to achieve more with less.

I am proud of what Fremantle Foundation has achieved this year. I thank everyone involved and I look forward to another year of positivity, optimism, passion, dedication, empathy, support, and equity.

**Stu MacLeod**  
*Executive Officer*

\* \$230,000 granted in 22/23FY, the remainder in 23/24FY

# Collective Giving







## Named Funds with our Foundation

We extend our gratitude to all the generous donors who support the Fremantle Foundation. It is because of your kindness and generosity that our Foundation continues to thrive and effectively serve our community. The remarkable work we support is made possible through your donations, workplace giving, and bequests in your wills.

In the 2022/2023 period, we have seen the Foundation expand to include 72 Named Funds, with the addition of four new Named Funds.

We encourage our donors to make annual contributions to these funds. Our aim is to provide a convenient and tax-deductible way of giving that is carefully managed. By consolidating, investing, and growing your donations, we are establishing reliable long-term funding sources for your community. This approach allows your donation to have a greater impact, and you have the flexibility to add to it at any time.

You can easily create your own Named Fund within the Foundation. Contributions to Named Funds are tax-deductible and directly benefit the community where you reside or work. These funds can bear the name of the donor, company, or the donor's family. The fund name may also serve as a tribute to someone or preserve the memory of a loved one, friend, or exceptional individual.

Your contributions will grow in alignment with the performance of the Foundation's responsibly investment portfolio. However, you have the freedom to contribute to your Named Fund as frequently as you desire.

# Bequests

We invite you to consider including the Fremantle Foundation in your will.

By leaving a charitable gift to the Fremantle Foundation through your Will – your gift will be managed in perpetuity so that it continues to support the organisations or causes you care about and leaves a lasting legacy in your community for future generations.

# Individual & Family Funds

Starting your own Named Fund is a great way to make a real difference in your community. The foundation allows you to structure your philanthropic giving to causes that you care about without the administrative burden.

Your contributions, which are tax- deductible, will automatically grow in line with the Foundation’s investment portfolio’s performance. However, you can contribute to your Named Fund as often as you like, to accelerate its growth. This can be done through direct contributions or by creating a link to your service or product revenue streams, at your discretion.

# Group Named Funds

The Foundation provides the opportunity for Group Named Funds to be developed, facilitating collective giving, and enabling individuals to make a big difference with a small contribution.

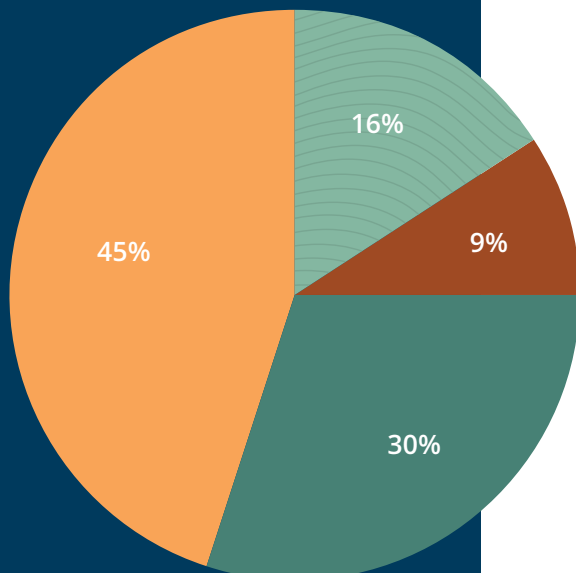
It might be a community group like a service club or a group that relates to a geographic region, a particular group of people or a particular impact area that the Foundation supports.

# Company Named Funds

More and more businesses are taking an interest in corporate social responsibility and choosing to give back to the local community. Participating in social good is increasingly important to the community, customers, and staff.

There are many small and large companies already doing great things in Western Australia. Setting up a Named Fund through the Fremantle Foundation provides an easy way to join them.

You can open your own Named Fund within the Foundation, in your Company’s name and watch it grow every year, directly helping the community where you operate. It will have all the benefits of your own company foundation, without the workload.



**Fund Size By Category**

- Individual/Family
- Company
- Group
- Memorial / Bequest

# Thank you to our Named Funds

---

A Liquid Future

---

AFL RAMS Community Support Fund

---

Anonymous Fund 1

---

Anonymous Fund 2

---

Anonymous Fund 3

---

At Home Care Collective

---

Bibbulmun Fund

---

Blue-eyed Hero Charitable Fund

---

Bodhi J Niblett Fund

---

Boutique Advisers Fund

---

Bray Family Fund

---

Cadd St Family Fund

---

Care Book Club

---

Carter Family Fund

---

Close to Home

---

Diffo

---

Duffield-Thomas Family Fund

---

Ellen Health Fund

---

End Homelessness WA

---

Esperance Ag Fund

---

Eureka Fund

---

Fair Tradie Project Fund

---

Felix Culpa

---

Fremantle Players Community Giving

---

Freo Give for Good Fund

---

Fund for Children and Young People

---

George M Kailis Fund

---

Gilkison Impact Fund

---

Growing Jurien Bay Fund

---

Growing Millbridge Fund

---

Hakea Fund

---

Hesperia Staff Impact Fund

---

Hillarius Fund

---

Hootstoke

---

Howard & Lindsey Read Fund

---

Impact100 Fremantle

---

J M Wright Fund

---

Jaspy Jones

---

Jin Memorial Initiative

---

John Cummins Memorial Fund (WA)

---

Kaye Host Fund

---

Kingkira Community Fund

---

Liberty Fund

---

Little Rabbitt Fund

---

Merenda Fund

---

Michael Barker Fund

---

MP+ Community Fund

---

Nectar for Women Fund

---

Newborn Mothers Fund

---

Paper Bird Fund

---

Peel Community Fund

---

Pilbara Fund

---

R Lake FF Fund

---

Renee Gardiner Fund

---

Santhosh Charity Fund

---

Smith & Jones Fund

---

Sophie Smith Fund

---

Sue's Amrita Fund

---

The Fulcrum Fund

---

The Hope Chest

---

The Kai Eardley Fund

---

The Merlin Fund

---

The Pelsart Charitable Fund

---

The TAMS Group Fund

---

The Townes Fund

---

Vieira Family Fund

---

Vital Signs Fund

---

WA Relief & Recovery Fund

---

Wooroloo Bushfires

---

Yogi Vibes Fund

# Named Fund Stories

## Business meets Philanthropy

### The Fulcrum Fund

Founded by Emma Williamson and Kieran Wong, The Fulcrum Agency is a creative consultancy that uses an innovative approach to support community and social outcomes through evidence-based design thinking. The Fulcrum Agency invests a percentage of all income derived through their work into The Fulcrum Fund, which contributes to a diverse range of projects and initiatives for First Nations people and communities across Australia. Since beginning its giving journey, The Fulcrum Fund has made a difference in the facilitation of Aboriginal arts, culture and advocacy and continues to do so in other areas as their impact grows and provides opportunities for communities to thrive.

*“The opportunity of architecture is not just in the creation of buildings. We want to seize this to leverage a new way of practicing that knowingly maximises impact.”*

– Emma Williamson,  
Co-Founder & Partner, The Fulcrum Agency

### Granting Snapshot

#### July 2022

\$3,000 Cinefest Oz

#### November 2022

\$1,000 Impact100 Fremantle 2022

#### December 2022

\$1,000 Lucy Saw Centre

#### February 2023

\$1,000 University New South Wales  
Philanthropy, Uluru Dialogues

#### April 2023

\$2,000 Cinefest Oz

#### April 2023

\$1,000 Kanyirninpa Jukurrpa

#### April 2023

\$1,375 Blue Room Theatre



## Community driven giving

### Esperance Ag Fund

The Esperance Ag Fund was established to make an enduring difference within the Esperance community. Through donations from the agricultural industry, the local farmers have a goal of supporting projects that are making a positive contribution to the Esperance community, which is reflected in their granting portfolio. The Esperance Ag Fund invests in opportunities that make Esperance a place anyone would want to live and thrive in, an exemplary case of the power of community coming together.

### Granting Snapshot

#### December 2022

\$5,000 Esperance Care Services

#### April 2022

\$5,000 Esperance Care Services

#### May 2023

\$15,000 Cannery Arts Centre

#### June 2023

\$3,240 Bay of Isles Community Outreach

#### June 2023

\$25,250 Recherche Aged Welfare Committee

### The Hope Chest

Lyndall started her Named Fund with the Fremantle Foundation in 2021 and has since made a difference to the lives of many. The Hope Chest has supported initiatives focused on the arts, youth, and education. The generous donations have fostered positive change for smaller groups and on a larger community scale. Lyndall has given to carefully selected organisations and initiatives that align with her values and interests, as the Foundation supports her in her charitable giving journey.

### Granting Snapshot

#### May 2023

\$3,000 Leeuwin Ocean Adventure Foundation

#### May 2023

\$3,000 Musica Viva

#### May 2023

\$3,000 Caralee Community School



Photo by Sarsby Martin



Photo by Musica Viva Australia

# Impact



# Our Impact

As the largest community foundation in Western Australia, we are dedicated to working with a diverse range of community-based charities across the state.

Our mission is to support meaningful social outcomes that result in improved quality of life in the Western Australian community, both now and in the future. To achieve this, we have established a Theory of Change which outlines the most effective and efficient approach to create a greater and longer-lasting impact.

## Theory of Change

The Theory of Change is the Foundation's way of helping to address the issue of inequity in Western Australian communities.

The diagram below illustrates how our Theory of Change works.



## Impact Methodology

The Foundation is dedicated to consistently enhancing its systems and procedures to measure its impact both quantitatively and qualitatively. The primary methods of collecting data include receiving feedback from donors and partners, analysing charity grant reports, tracking donations received and grants given, monitoring funds under management, and evaluating online and media presence.

# Key Impact Areas

Our donor-advised funding and strategic grants program focuses on four key areas:

## **Housing, Homelessness & Disadvantage**

In Australia, people experiencing homelessness are among the most marginalized members of society. According to the latest ABS Census Report 2021, the number of homeless people in Western Australia has increased by 8.6% over the past five years, reaching 9,729 in 2021. The Foundation's primary objective is to encourage collaboration between different sectors and reduce the underlying causes of homelessness and disadvantage.

## **Education, Employment & Training**

According to the latest statistics, only 56% of individuals aged over 15 years in Western Australia have completed Year 12 schooling (or equivalent) as of 2021. Furthermore, a 2019 report by the Brotherhood of St Laurence revealed that WA has the second-highest youth unemployment rate in Australia, standing at 14.5% in contrast to the national average of 11.2%. Despite research demonstrating that meaningful employment is crucial for positive mental, physical, and economic wellbeing, we are witnessing a decline in employment opportunities for young people.

## **Healthy, Resilient & Inclusive Communities**

Research has indicated that there are immense advantages of being a part of a community. These benefits include opportunities for support, connection, learning, fulfillment, and a focus on the greater good. A thriving community that is inclusive is one that supports the diversity of Western Australians and actively encourages them to participate in community activities.

## **Charitable Sector Capacity Building**

A strong philanthropic and charitable sector plays a crucial role in helping us achieve our goals. We understand that this sector faces challenges such as limited resources, fragmentation, and intense competition. By working together, we can bring the right individuals together in an effective way to enhance positive outcomes



# Impact Snapshot

**60**  
Grants

**\$1.1m**  
Donor Advised &  
Strategic Grants  
program

**7**  
Key Partners  
Sector Capacity  
Building

**\$13k**  
Housing,  
Homelessness  
& Disadvantage

**\$91k**  
Education,  
Employment  
& Training

**\$982k**  
Healthy, Resilient &  
Inclusive Communities

## \* Spotlight Areas

**\$392k**  
Indigenous  
Australians

**\$365k**  
Disaster Relief  
& COVID-19

**\$112k**  
Impact100  
Fremantle

\* The three spotlight totals are included in the three key areas, with cross over also between Indigenous Australians and Disaster Relief.

# UN Sustainable Development Goals

## Our contribution to the UN SDGs

The alignment of the UN Sustainable Development Goals (SDGs) and the work of community foundations is clear. The 5 P's (People, Planet, Prosperity, Peace and Partnership) in the 2030 Agenda capture the breadth of community foundation work and align with the core mission of community foundations – to drive philanthropy and collaboration across communities for transformative and sustainable change.

The table below looks at how our place-based community foundation model aligns with the SDGs. By thinking globally and acting locally, we are demonstrating how funding local charities and community organisations can play a key role in helping to achieve the 2030 Agenda.

In FY 22/23 the SDG targets to which we most contributed were:

SDG Goal	# of Grants	Grant Value
2. Zero Hunger	3	\$10,000
3. Good Health and Wellbeing	18	\$229,706
4. Quality Education	8	\$66,102
8. Decent Work and Economic Growth	1	\$25,000
10. Reduced Inequalities	10	\$474,000
11. Sustainable Cities and Communities	18	\$213,855
13. Climate Action	1	\$2,200
15. Life on Land	1	\$65,000

## Impact Snapshot

### Improve Housing, Homelessness & Disadvantage

4 Grants, \$13,000

SDG 11. Sustainable Cities and Communities

#### Outcome 1: Homelessness or entrenchment of homelessness is prevented

Impact: Community Support

Example: Lucy Saw Centre

#### Outcome 1.2: Supply of affordable, sustainable, and healthy housing is increased

Impact: Supporting older women experiencing, or at risk of homelessness

Example: Uniting WA, Wyn Carr House

## Create Education & Employment Opportunities

9 Grants, \$91,102

SDG 4. Quality Education

SDG 8. Decent Work and Economic Growth

---

### Outcome 1: Relevant skills and capabilities, including social entrepreneurship is increased

---

Impact: Sector Capacity

Example: The Pinnacle Foundation

---

## Healthy, Resilient & Inclusive Communities

49 Grants, \$981,762

SDG 2. Zero Hunger

SDG 3. Good Health and Well-being

SDG 10. Reduced Inequalities

SDG 11. Sustainable Cities & Communities

SDG 13. Climate Action

SDG 15. Life on Land

---

### Outcome 1: Food security

---

Impact: Healthy People

Example: Foodbank, Feed The Little Children

---

### Outcome 1.2: Improved wellbeing and prosperity

---

Impact: Inclusive and thriving community

Example: National Suicide Prevention & Trauma Recovery Project

---

### Outcome 1.3: Strengthen resilience and adaptive capacity to climate-related hazards and natural disasters.

---

Impact: Resilient communities

Example: WA Relief & Recovery Fund

---

## Charitable Sector Capacity Building

SDG10. Reduced inequalities

---

### Outcome 1: An effective community philanthropic ecosystem and a capable charitable sector support the achievement of our aspirations

---

Impact: Sector Capacity

Examples: National Investment Dialogue partner, Peel Community Fund support structure, Community Foundation Australia membership, Philanthropy Australia membership, Vital Signs

---

# Grants

**In this 2022/23 Financial Year, the Fremantle Foundation again distributed more than \$1 million, consolidating another record year of community giving.**

Thanks to the generosity of our Donor Community, we provided 60 grants to 52 Charitable Organisations across Australia, a total of \$1.1 million.

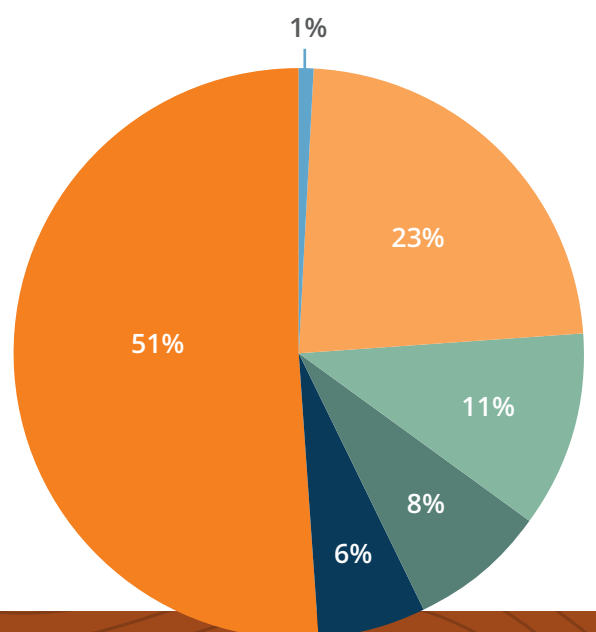
The Fremantle Foundation is privileged to meet and collaborate with many wonderful Charitable Organisations that provide critical support and services to the WA community and beyond.

As in past years, our funding support remains strong within the greater Fremantle area. However, our reach has extended further into WA's regional and remote communities. Despite the diversity among our grant recipients, passion and commitment is the consistent factor that unites them all.

We have a year-round open grant process, welcoming grant requests from our Named Funds and providing grant suggestions tailored to their philanthropic goals. Our grant process is rigorous and includes due diligence, identification of community needs, assessment of intended impact and how measurement of outcomes will be undertaken.

Fremantle Foundation's granting support of the Community far exceeds our Public Ancillary Fund legal obligation. This is only possible due to the unwavering support of our loyal Named Fund Donors and generous bequests to the Foundation.

Grants by Category	
<span style="color: #f4a460;">●</span>	Health & Wellbeing
<span style="color: #2e8b57;">●</span>	Education
<span style="color: #f4a460;">●</span>	Family & Community
<span style="color: #8bc34a;">●</span>	Arts & Culture
<span style="color: #42a5f5;">●</span>	Homelessness
<span style="color: #1e3d59;">●</span>	Environment



# Grants Allocation Summary 2022/2023

## Healthy, Resilient & Inclusive Community

### Arts & Culture

Cinefest Oz	\$5,000.00
Blue Room Theatre	\$1,375.00
Cannery Arts Centre	\$15,000.00
Kanyiminpa Jukuurrpa	\$1,000.00
CircusWA	\$100,000.00

### Environment

Yanunijarra Aboriginal Corporation	\$65,000.00
Climate Justice Union	\$2,200.00

### Family & Community

PCYC Fremantle	\$10,000.00
St Mary's School Northampton	\$5,125.00
Drought Angels	\$7,000.00
Aussie Helpers	\$7,000.00
Rural Aid	\$5,000.00
Feed The Little Children	\$5,000.00
Esperance Care Services	\$10,000.00
Foodbank WA	\$5,000.00
Inspired Crusaders	\$300,000.00
Centre for Accessibility Australia	\$10,000.00
University New South Wales Giving	\$1,000.00
Leeuwin Ocean Adventure Foundation	\$3,000.00
Northampton Old School Community Initiative	\$17,000.00
Shire of Dardanup	\$42,105.26
Recherche Aged Welfare Committee	\$25,250.40
Stephen Michael Foundation	\$20,000.00
Australian Red Cross	\$2,000.00
Foundation for Indigenous Sustainable Health	\$75,000.00

### Health & Wellbeing

Northampton Junior Football Club	\$1,105.00
East Fremantle Football Club	\$21,052.64
Josh Kennedy Foundation	\$15,000.00
Bethesda Foundation	\$2,000.00
The Leukaemia Foundation of Australia	\$4,438.00
Kai Eardley Foundation	\$1,189.16
Bay of Isles Community Outreach	\$3,240.00

Rebound WA	\$3,750.00
Saba Rose Button Foundation	\$3,750.00
zero2hero	\$6,800.00
MND WA	\$3,750.00
National Suicide Prevention & Trauma Recovery Project	\$10,000.00
Central Kimberly Football League	\$90,000.00
Glass Jar Australia	\$30,000.00
Athletics West	\$52,631.58
Waves of Wellness Foundation	\$4,000.00

## Education & Employment

### Education

Australian Schools Plus	\$12,025.00
Communicare	\$1,000.00
Musica Viva	\$3,000.00
The Smith Family	\$7,000.00
Woolkabung Kiaka Aboriginal Corporation	\$25,000.00
Clontarf Foundation	\$1,407.00
Adelaide Crows Foundation	\$25,000.00
The Pinnacle Foundation	\$16,670.00

## Housing, Homelessness & Disadvantage

### Homelessness

Uniting WA	\$8,000.00
Zonta House	\$4,000.00
Lucy Saw Centre	\$1,000.00

**Note:** A total of 60 grants distributed to 52 different Charitable Organisations.

CircusWA \$100,000 grant distributed in partnership with Spinifex Trust.

# Granting Stories 2022/2023

## Key Focus Area: Housing, Homelessness & Disadvantage

Subcategory: Homelessness

### The Lucy Saw Centre Association

For over 40 years, [The Lucy Saw Centre Association](#) has provided a safe, nurturing environment for women and their children affected by Family and Domestic Violence. Clients are supported with emergency accommodation and outreach programs so they can be inspired to live a life feeling safer, with increased knowledge and awareness of Family and Domestic Violence.

A \$1,000 grant this year provided practical assistance for five families escaping Family & Domestic Violence. Each family, upon arrival, receives food, clothing, toiletries, and anything else required for their stay

As each family is different, flexible granting support allows The Lucy Saw Centre to respond appropriately to assist the women and their children on their recovery journey. In this instance, one family consisting of a Mum and three children arrived at the Fremantle Refuge, Warrabee, requiring not only food and clothing but also vehicle repairs due to a smashed window by the Perpetrator.

Over the years, the Named Fund Donors of the Fremantle Foundation have been incredibly generous in supporting the vital work of The Lucy Saw Centre and other such organisations.

### Granting Snapshot

**December 2022** \$1,000 The Fulcrum Fund

**December 2021 & July 2023** \$4,000 Anonymous Fund 2

## Key Focus Area: Education & Employment

Subcategory: Education

### The Pinnacle Foundation

[The Pinnacle Foundation](#) is Australia's LGBTQIA+ education charity. The Pinnacle Foundation provides educational scholarships, mentoring and opportunities for young LGBTQIA+ Australians to realise their full potential and overcome challenges arising from their identity.

In collaboration with one of our Named Funds, The Bibbulmun Fund, The Pinnacle Foundation has created The Bibbulmun Fund Scholarship. The scholarship is awarded to disadvantaged Aboriginal and Torres Strait Islanders (ATSI) and LGBTQIA+ identifying young adults to undertake tertiary studies.

The Bibbulmun Fund has just completed their first Gold Partnership round and again generously extended their funding support for another three years. The Bibbulmun Fund Scholarship program will continue to play an essential role in the lives of ATSI young adults in the LGBTQIA+ community of Western Australia.

### Granting Snapshot

**June 2020** \$50,000 Bibbulmun Fund, 3-Year Partnership

**June 2023** \$50,000 Bibbulmun Fund, 3-Year Partnership Extension



Meet  
the WA  
Scholarship  
Recipient

## Key Focus Area - Healthy, Resilient, Inclusive Communities

### Subcategory – Family & Community

#### Feed The Little Children

After extensive consultation with local community members, [Feed The Little Children](#) was established in 2011 to assist young families in their struggle to maintain food security. Based in Broome, 2000km north of Perth, Feed The Little Children's support extends to other regions in the Kimberley.

The \$5,000 grant from the TAMS Group Fund supported the preparation and delivery of hot, nutritious meals to children and nursing mothers at risk of going hungry. The grant assisted in the preparation and delivery of over 7000 meals.

The benefit of this grant far exceeds the immediacy of a meal, with a report compiled by the Nulungu Research Institute highlighting the more significant impact of a community caring for its young people.

The TAMS Group Fund was the first major philanthropic supporter of Feed The Little Children. This has allowed the charitable group to continue its operation and given them the confidence to pursue other funding partners.

#### Granting Snapshot

**December 2022** \$5,000 TAMS Group Fund





## Key Focus Area - Healthy, Resilient, Inclusive Communities

### Subcategory - Family & Community

#### Centre for Accessibility Australia

The [Centre for Accessibility Australia](#) (CFA Australia) is an award-winning not-for-profit organisation that promotes digital access throughout Australia. The digital world is a rapidly changing environment that we all increasingly rely upon. Sadly, for people with disability, much of the internet remains inaccessible.

Founded in 2018, CFA Australia was established to promote the accessibility movement through advocacy, research, training services, auditing services and events. CFA Australia aims to reduce the accessibility gap by creating a more inclusive world so that people with disability can have equal access to technology and the internet.

Long-term supporters of CFA Australia, the Bray Family Fund, provided a \$10,000 grant supporting the 2023 Australian Access Awards. The Australian Access Awards recognise organisations and individuals who demonstrate extraordinary commitment and deliver exceptional outcomes for Australians with disability. Launched every two years on Global Accessibility Awareness Day, the Australian Access Awards is more than just an event; it is a celebration of leadership in digital accessibility.

#### Granting Snapshot

April 2023 \$10,000 Bray Family Fund



# Impact100 Fremantle

**Everyone should have the opportunity to create positive social change in their community.**

Impact100 Fremantle was established in 2012 to engage donors keen to support our community and experience first-hand the impact of collective giving.

The Impact100 Fremantle collective giving program is a powerful mechanism that pools the individual \$1,000 donations of a group of like-minded people that will make a lasting difference in the Fremantle region through an annual grant to a community organisation.

The recipient of the Impact100 Fremantle grant is decided by donor vote. Every donor who provides a \$1,000 contribution to the program is invited to the Annual Voting & Awards Night to hear the funding pitch from the four shortlisted organisations that have applied for the Impact100 Fremantle grant. The organisation with the most donor votes receives the game-changing grant. Through this process, donors have a say about where their donation goes as well as being immersed in the work of four community organisations.

In 2022, we celebrated the 10th anniversary of Impact100 Fremantle. This milestone would not have been possible without the indelible support of our donors, sponsors, volunteers, and staff. Over the 10 years, Impact100 Fremantle has donated more than \$1.1 million to the Fremantle community.

The major grant recipient for 2022 was CircusWA, taking home \$100,000 to make a difference in the lives of young people and helping them develop into confident, healthy individuals through their Level Up Circus Academy. A fantastic opportunity for young people who are dreaming of being circus performers.

For more information about Impact100 Fremantle and how you can be involved in the future please visit:  
[www.fremantlefoundation.org.au/impact100-fremantle](http://www.fremantlefoundation.org.au/impact100-fremantle)



# WA Relief & Recovery Fund

## WA Relief & Recovery Fund

Fremantle Foundation established the WA Relief & Recovery Fund (WARRF) in early 2020 in response to the COVID-19 pandemic and subsequent crises, including the Wooroloo Bushfires 2021 in the Perth outer metropolitan area and Fitzroy River Floods 2023 in WA's Kimberley region.

All funds raised through WARRF support non-profit, charitable organisations working in impacted regions by providing small to medium-sized grants to aid recovery and build resilience for the future.

Importantly, the fund provides a much-needed way for West Australians and philanthropic partners, such as the Paul Ramsay Foundation, to support our impacted regional communities following the pandemic and devastating natural disasters.

In early January 2023, Western Australia's Kimberley region was battered by ex-tropical cyclone Ellie, causing the Fitzroy River to rise to record high levels, devastating property and vital infrastructure and leaving hundreds of people homeless and further isolating up to 40 vulnerable Indigenous communities who rely on services and medical assistance in Fitzroy Crossing.

In response, Sue Stepatschuk from the Fremantle Foundation and Kim Collard, highly regarded Indigenous leader, Chair and founder of The Bibbulmun Fund, Kulbardi Pty Ltd and Kooya Fleet Services, raised \$380,000 to support the Fitzroy River community and co-design a culturally appropriate community engagement method. This included visiting Fitzroy River to meet and consult with community leaders in person and to support a community-led approach to identifying areas of need that WARRF and the Bibbulmun Fund ultimately funded.

Our combined efforts have resulted in 6 grants awarded to 5 indigenous-owned or led charitable organisations delivering vital services and community activities to the Fitzroy River region.

This includes providing funding for the successful delivery of the Yajillara Festival, replacing lost equipment for the Yanunijarra Ranger Program, additional vehicles for Gurama Yani U's Indigenous Employment Support Initiative, an all-terrain vehicle and four-wheel drive for FISH (Foundation for Indigenous Sustainable Health) to access remote areas, provide temporary staff accommodation and support the ongoing maintenance of the airport landing strip, and seed funding to Central Kimberley Football League for the reactivation of the Remote Community Football Club Development program.

We are extremely grateful to the Fitzroy River community members and their leaders for generously engaging with us during a time of devastation, loss, and exhaustion, to help ensure our granting has a meaningful and long-term positive impact on the recovery and future resilience of the Fitzroy River region and community.

Fremantle Foundation would also like to express our sincere appreciation and thanks to our major WARRF funder, the Paul Ramsay Foundation, for their generosity and support of the WA community.

## Granting & Activity Summary

**FISH (Foundation for Indigenous Sustainable Health)** \$75K

**Yanunijarra** \$65K

**Central Kimberley Football League** \$90K

**Gurama Yani U** (July 23) \$90K

**Yajillara Festival** (July 23) \$30K

Note: Funding for Gurama Yani U & Yajillara is not captured in the Grants Summary Allocation list nor the Spotlight figures as these grants were not completed in the 22/23 Financial year.



# About Us



# Board of Directors & Staff



**Tanya Hundloe**  
*Chair, 2021*  
Director, Social Money



**Richard Usher**  
*Board Member, 2020*  
Lead Community Services,  
Communicare



**Carrie Clark**  
*Deputy Chair, 2016*  
CEO, KIIND



**Carina Becker**  
*Board Member, 2022*  
Partner – Audit & Assurance,  
Grant Thornton



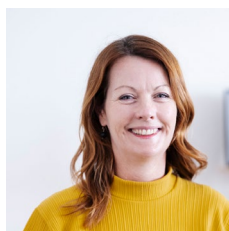
**Lee Bartlett**  
*Treasurer, 2016*  
CEO, TAMS Group



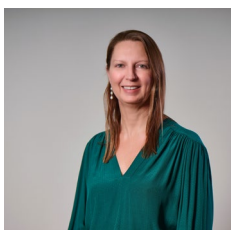
**Stu MacLeod**  
*Executive Officer, 2023*  
Fremantle Foundation



**Michael Chester**  
*Secretary, 2020*  
Co CEO, Uniting WA



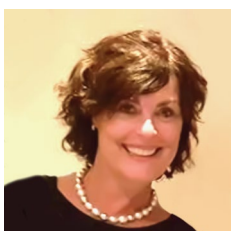
**Sue Stepatschuk**  
*Director of Partnerships & Social  
Impact, 2019*  
Fremantle Foundation



**Joanne McDonald**  
*Board Member, 2022*  
Company Secretary & Head  
of Corporate Affairs, IGO  
Limited



**Pauline Eves**  
*Grants Manager, 2021*  
Fremantle Foundation



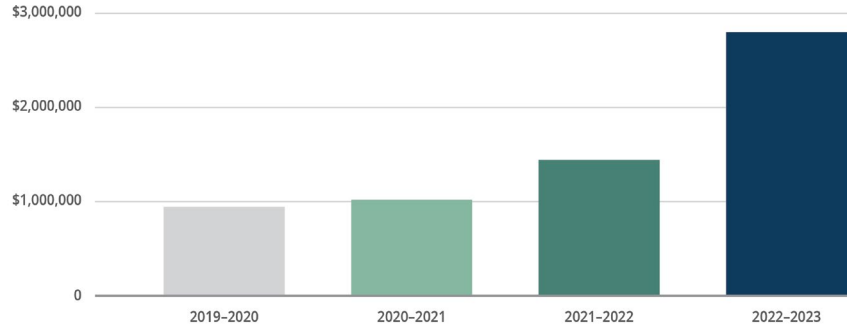
**Andrea McCallum**  
*Board Member, 2023*  
Sessional Legal Member,  
Mental Health Tribunal



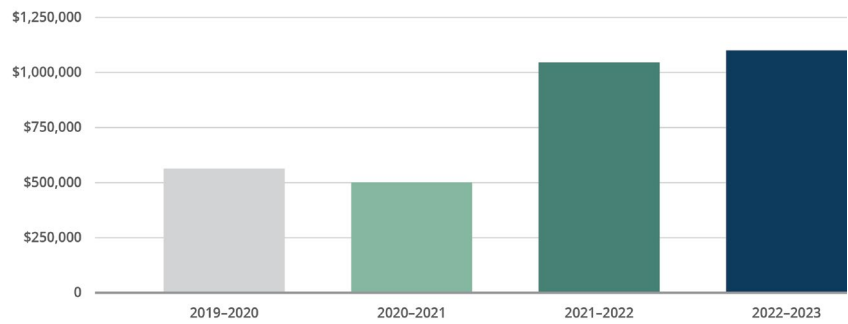
**Mrinal Banerjee**  
*Marketing & Communications  
Coordinator, 2021*  
Fremantle Foundation

# Financial Snapshot

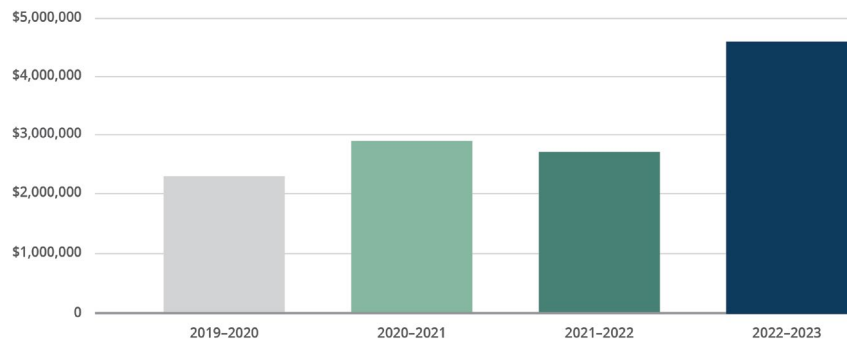
## Total Donations



## Total Value of Grants Distributed



## Total Funds Under Management



**Note:** The financial statements and the audit report for 2019/20, 2020/21 and 2021/22 are available on request to the EO or can be found on the ACNC website. The 2022/23 audit will be completed in December 2023. [www.acnc.gov.au/](http://www.acnc.gov.au/)

# Our Sponsors

---

## Capacity Donors

---

Baldock Family

---

Mostyn Family

---

---

## Sponsorships & Partnerships

---

City of Fremantle

---

Containers For Change

---

DADAA

---

Fitness Results - Anzac River Run

---

Grill'd Fremantle

---

Leopold Hotel

---

Lotterywest

---

North Fremantle Football Club

---

---

## Philanthropic Collaborations

---

Paul Ramsay Foundation

---

Spinifex Foundation

---

Minderoo Foundation

---

---

## Pro Bono Support

---

Alan Dawson, Witzend

---

Herbert Smith Freehills

---

BDO

---

---

## Low Bono Support

---

FAJ Accounting

---

La Chiquita

---

Old Bridge Cellars

---

---

## Professional Memberships

---

Community Foundations Australia

---

Fremantle Chamber of Commerce

---

Philanthropy Australia

---

---

## Patrons

---

Peter Bell, Fremantle Dockers

---

# Our Awards

## Fremantle Business Awards

### Corporate Social Responsibility Award

*Winner 2017, 2018*

### Contribution to Fremantle

*Finalist 2021, Winner 2022*

### Hall of Fame

*Finalist 2023*

# Contact Us

## General contact

[admin@fremantlefoundation.org.au](mailto:admin@fremantlefoundation.org.au)  
[www.fremantlefoundation.org.au](http://www.fremantlefoundation.org.au)

---

Old Boys School  
92 Adelaide St  
Fremantle WA 6160

---

PO Box 1397  
Fremantle WA 6959

---

 Instagram

 Facebook

 LinkedIn

---

**Fremantle Foundation Ltd**  
ABN 19147249394

**Fremantle Foundation Trust**  
ABN 23992104836

*Amplify your giving*